

COOLING TOWER MOTORS



Cooling Tower Motors - General Technical Information

Features of LHP Cooling tower motors

- Suitable for outdoor duty application and 100% humid and chemical environment.
- IP 55 Protection to prevent water ingress.
- Anticorrosive paint for better life
- Reliable bearing life L-10 100,000 hours
- Can be operated on VVVF for energy saving between 30 to 50 Hz frequency.
- Can eliminate the gear box, cooling system, shafts, couplings, bearings, resulting in less maintenance.
- Low vibration and noise

Range	Up to 425 HP (315 kW)
R.P.M.	1500, 1000, 750
Pole	4/6/8
Mounting	B5 / Shaft downward position V1
Frame	71 to 355 L
Protection	IP 55
Insulation	F Class
Voltage	415 V, 380 V or as per requirement
Frequency	50 Hz or 60 Hz
Duty	S1
Paint	With Anti corrosive Epoxy paint

Applicable Standards

IS - 4722	Specifications for rotating electrical machine
IS 60034-1/ IS 15999-1	Specifications for 3 phase induction machine
IS/ IEC 60034 - 5	Degree of protection provided by enclosure for rotating electrical machines
IS/IEC 60034 2-1	Method of determination of efficiency of rotating electrical machines
IS - 2223 (IEC 72 - 1)	Dimensions of 3 phase flange mounted induction motors

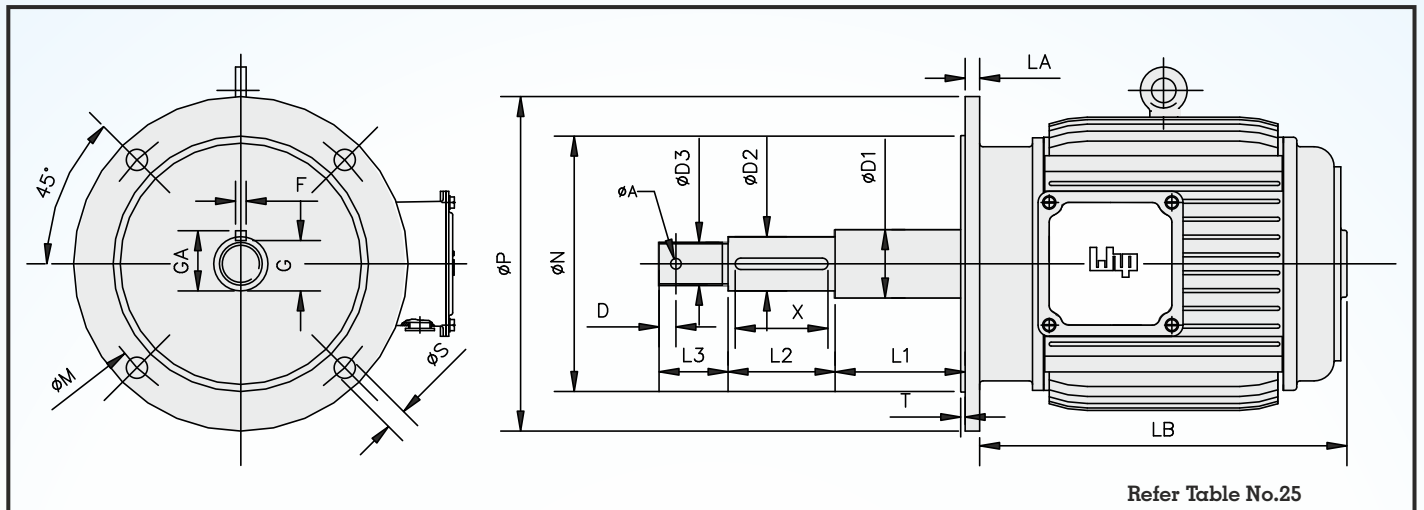


COOLING TOWER MOTORS

Upto 355 Frame

COOLING TOWER MOTORS

Cooling Tower Motors - General arrangement Drawing/Dimensions



Refer Table No.25

Table No. - 25

Frame size	M	N	P	SX NO.	T	LA	LB	AD	F	G	GA	ØD1	L1	D2	L2	D3	L3	X	ØA	B
71	130	110	160	10X4	3.5	10	180	115	5	11	16	17	55	14 ⁶	25	M12	30	20	---	---
80	165	130	200	12X4	3.5	10	220	120	6	15.5	21.5	20	60	19 ⁶	50	M16	30	45	---	---
90S	165	130	200	12X4	3.5	12	240	160	8	24	31	30	60	28 ⁶	50	M24	50	45	5	8
90L	165	130	200	12X4	3.5	12	262	160	8	24	31	30	60	28 ⁶	50	M24	50	45	5	8
100L	215	180	250	15X4	4.0	12	280	165	8	24	31	30	60	28 ⁶	50	M24	50	45	5	8
112M	215	180	250	15X4	4.0	12	300	190	8	24	31	30	60	28 ⁶	50	M24	50	45	5	8
132S	265	230	300	15X4	4.0	12	316	205	10	33	41	40	90	38 ⁶	75	M30	50	65	5	8
132M	265	230	300	15X4	4.0	12	354	205	10	33	41	40	90	38 ⁶	75	M30	50	65	5	8
132M(N)	265	230	300	15X4	4.0	12	394	205	10	33	41	40	90	38 ⁶	75	M30	50	65	5	8
160M	300	250	350	19X4	5.0	13	420	260	12	37	45	45	90	42 ⁶	75	M30	50	70	5	8
160L	300	250	350	19X4	5.0	13	462	260	12	37	45	45	90	42 ⁶	75	M30	50	70	5	8
180M/L	300	250	350	19X4	5.0	13	520	270	14	42.5	51.5	50	100	48 ⁶	105	M30	50	90	5	8
200L	350	300	400	19X4	5.0	15	570	313	16	49	59	60	100	55 ⁶	105	M30	50	95	5	10
225S/M	400	350	450	19X8	5.0	16	605	370	18	53	64	65	100	60 ⁶	115	M30	50	100	5	10
250M	500	450	550	19X8	5.0	22	695	415	18	58	69	70	100	65 ⁶	115	M40	60	100	5	10
280S/M	500	450	550	19X8	5.0	22	785	430	20	67.5	79.5	90	120	75 ⁶	120	M40	60	100	5	10
315L	600	550	660	24X8	6.0	22	935	525	22	71	85	95	130	80 ⁶	120	M40	60	120	5	10